

2009

AUGUST

Calendar grid for August 2009 with days of the week (S-M-F-S) and dates 1-31.

SEPTEMBER

Calendar grid for September 2009 with days of the week (S-M-F-S) and dates 1-30.

OCTOBER

Calendar grid for October 2009 with days of the week (S-M-F-S) and dates 1-31.

NOVEMBER

Calendar grid for November 2009 with days of the week (S-M-F-S) and dates 1-30.

DECEMBER

Calendar grid for December 2009 with days of the week (S-M-F-S) and dates 1-31.

10/09 REVISION OF GWINNETT COUNTY PUBLIC SCHOOLS 2009-10 STUDENT CALENDAR



LEGEND

- 1 First and Last Days of School
1 Student Holiday
1 Flood Make-up Day (to make-up Sept. 21 and 22)
1 Snow Make-up Day or Student Holiday
1 Early Release Days (Grades K-8)
— HS Final Exams (Grades 9-12)

Early release days are held twice a year in elementary and middle schools to allow for parent-teacher conferences. School is dismissed 2 1/2 hours early.

The calendar has been revised to note the two flood days taken in September and to designate two additional snow days.

- First flood day (Sept. 21) missed— Make up on Feb. 12;
Second flood day (Sept. 22) missed— Make up on March 15;

With the possibility of more inclement weather during the winter months, GCPS has designated two additional snow days, for a total of three snow make-up days for the rest of the school year.

- First day missed— Make up on Feb. 15 (added 10/09);
Second day missed— Make up on April 2 (added 10/09);
Third day missed— Make up on May 27.

Unused snow make-up days will be student holidays.

If bad weather causes school to be cancelled or dismissed early, public announcements will be made on GCPS TV, on the school system's web site (www.gwinnett.k12.ga.us), and via metro-Atlanta radio and television stations.

Learn more about our schools...

- Watch GCPS TV on these cable stations, or go online to stream live programs or watch video on-demand (http://www.gwinnett.k12.ga.us/gcpstv):
AT&T Check U-verse Listings
Charter Channel 22
Comcast Channel 24 or 26 (digital only)
• Visit our web site at www.gwinnett.k12.ga.us.
• Sign up for GCPS' e-mail newsletter, eNews.
• Attend School Board meetings.



437 Old Peachtree Rd., NW, Suwanee, GA 30024-2978
678-301-6000 • www.gwinnett.k12.ga.us

2010

JANUARY

Calendar grid for January 2010 with days of the week (S-M-F-S) and dates 1-31.

FEBRUARY

Calendar grid for February 2010 with days of the week (S-M-F-S) and dates 1-28.

MARCH

Calendar grid for March 2010 with days of the week (S-M-F-S) and dates 1-31.

APRIL

Calendar grid for April 2010 with days of the week (S-M-F-S) and dates 1-30.

MAY

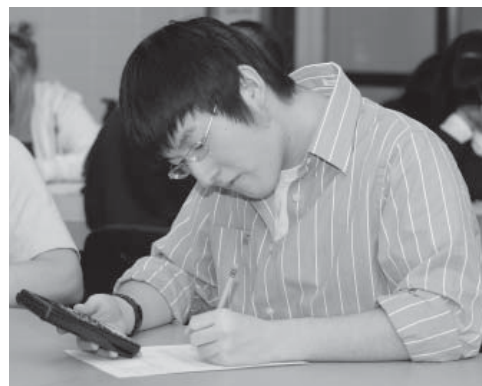
Calendar grid for May 2010 with days of the week (S-M-F-S) and dates 1-31.

See reverse side for more information.

Revised October 2009

2009–10 TESTING CALENDAR

Regular attendance has a direct influence on student achievement. That’s why it is important that students be in school every day, and especially on test days. Attendance on test days gives students an opportunity to show what they know, providing teachers with important information about each student’s learning. Below is a list of dates when Gwinnett students will take national, state, and system assessments during the 2009–10 school year. While these days have been set aside for test administration, it is important to remember that only a small amount of time— ranging from as little as one hour up to two hours— is actually spent testing on a given day. Please use this for reference when planning appointments or time away from school.



ELEMENTARY SCHOOL TESTING DATES

Sept. 21–25, 2009	Cognitive Abilities Test (CogAT)	Grades 1, 3, and 5
Oct. 19–28, 2009	Iowa Tests of Basic Skills (ITBS)	Grades 3 and 5
Jan. 19–March 1, 2010	ACCESS for ELLs Test Administration Window	English Language Learners
March 3, 2010	Georgia Writing Assessment	Grade 5
March 15–26, 2010	Georgia Writing Evaluation Window	Grade 3
March 17, 2010	Gateway Mathematics Reasoning Test (open-ended)	Grade 4
*April 14–16, 2010	Georgia Criterion-Referenced Competency Tests (CRCT)	Grades 1 and 2
*April 19–23, 2010	Georgia Criterion-Referenced Competency Tests (CRCT)	Grades 3–5

MIDDLE SCHOOL TESTING DATES

Sept. 21–25, 2009	Cognitive Abilities Test (CogAT)	Grade 8
Oct. 19–28, 2009	Iowa Tests of Basic Skills (ITBS)	Grade 8
Jan. 19–March 1, 2010	ACCESS for ELLs Test Administration Window	English Language Learners
Jan. 20, 2010	Georgia Writing Assessment	Grade 8
March 17, 2010	Gateway Mathematics Reasoning Test (open-ended)	Grade 7
*April 19–23, 2010	Georgia Criterion-Referenced Competency Tests (CRCT)	Grades 6–8
May 12, 2010	Georgia End of Course Test (Accelerated Integrated Algebra I only)	Grade 8

** These testing dates were shifted to avoid testing immediately after spring break.*

HIGH SCHOOL TESTING DATES

Sept. 30, 2009	Georgia High School Writing Test	Grade 11
Oct. 14, 2009	PSAT (no charge for grade 10, fee for grade 11)	Grade 10 Grade 11 optional
Dec. 16–18, 2009	Georgia End of Course Test Window, designated courses Specific test dates for designated courses to be determined.	Grades 9–12
Dec. 16–18, 2009	Final Exams	Grades 9–12
Jan. 19–March 1, 2010	ACCESS for ELLs Test Administration Window	English Language Learners
March 22–25, 2010	Georgia High School Graduation Tests (Language Arts, Mathematics, Science, and Social Studies subtests)	Grade 11
April 20 and 22, 2010	High School Gateway (Science/Language Arts and Social Studies/Language Arts)	Grade 10
May 3–14, 2010	Advanced Placement (AP) Exams	AP students
May 10–21, 2010	Georgia End of Course Test Window, designated courses Specific test dates for designated courses to be determined.	Grades 9–12
May 24–26, 2010	Final Exams	Grades 9–12

Note: High schools on block schedule or mini-semester will have an additional testing window for End of Course Tests and Final Exams in October and March. Contact your local school with questions.

